

INTREPID CONTROL SYSTEMS, INC.

neoECU 10

Low Cost Embedded ECU

Need a scriptable, low cost node for CAN, K-Line, and LIN? The neoECU 10 fills this need by providing 2 CAN channels, LIN, analog input, and PWM I/O. The node runs the Vehicle Spy Core Mini engine for easy setup.

Applications:

- Gateway Nodes
- Simulators
- Automated Testers
- ECU Replacement

Features:

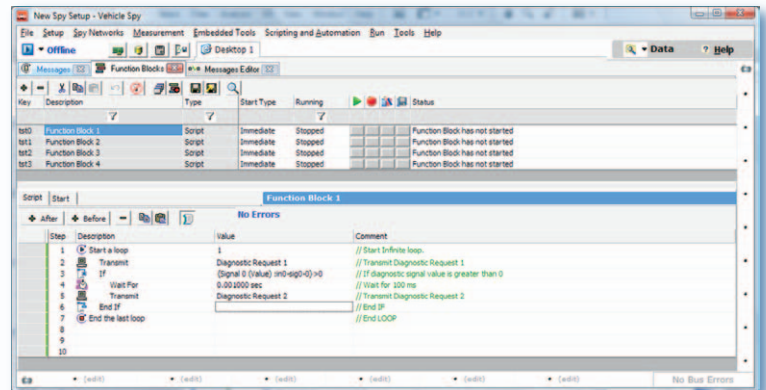
- 40 MIPS DSP
- 6.0-26.5V operation
(expandable in specific configurations)
- 4 0-26V analog inputs (800K input impedance)
- 6 PWM I/O 0-VBATT 50mA low side drivers
- 2 MISC Buttons external wired
(two internal buttons)
- 5 LEDs
- CAN Channels: Hardware configuration between SWCAN, LSFTCAN, and DWCAN
- LIN/K-Line Channels: One Channel, One L-Line possible with external driver
- Two MISC I/Os
- Power management allows 5 mA sleep mode
(200 uA Hibernate Mode in specific configurations)

The neoECU-10 requires one Vehicle Spy full license and a neoVI or ValueCAN to program it via CAN. Contact ICS for more details and for specific configurations.

Ordering Information:

Part Number	Description
neoECU-10-HHL+	neoECU-10 device with 2 DW CAN channels
neoECU-10-HHL+X	neoECU-10 device with 2 DW CAN channels (VOLUME PRICING)
neoECU-10-HLSL+	neoECU-10 device with 1 DW CAN channel and 1 LSFT/SW CAN channel
neoECU-10-HLSL+X	neoECU-10 device with 1 DW CAN channel and 1 LSFT/SW CAN channel (VOLUME PRICING)

*Specifications subject to change. Please contact Intrepid for the latest information.



Vehicle Spy 3 Software creates a user friendly environment for defining your ECU. Here the graphical scripting environment makes rapid prototyping as simple as point and click.

Pinout					
1	SW CAN	10	AIN 1	19	PWM IO 4
2	MISC WAKE	11	AIN 2	20	PWM IO 5
3	LSFT CAN H	12	DEBUG DATA	21	PWM IO 6
4	LSFT CAN L	13	GNDA	22	AIN 3
5	PWM IO 1	14	DW/LS/SW CAN H	23	AIN 4
6	PWM IO 2	15	DW/LS CAN L	24	DBG RESET
7	MISC 1	16	DW CAN H	25	V BATT
8	LIN	17	DW CAN L		
9	DBG CLK	18	PWM IO 3		

Intrepid Control Systems, Inc.

31601 Research Park Drive Madison Heights, MI 48071 USA (ph) +1-586-731-7950 (fax) +1-586-731-2274

www.intrepidcs.com

Rev.08292011